



£500 Monthly

Lichfield Road, Rushall, Walsall

Commercial Property

01922 322988



www.remaxlocalestateagents.co.uk



Step Inside

Key Features

- PRIME LOCATION ON LICHFIELD ROAD
- SPACIOUS AND VERSATILE COMMERCIAL SPACE
- MONTHLY RENTAL AT £500
- NEGOTIABLE LEASE TERMS
- £1500 DEPOSIT REQUIRED
- ADAPTABLE INTERIOR FOR CUSTOMIZED USE
- CONVENIENT KITCHEN AND PRIVATE TOILET

Property Description

SPACIOUS COMMERCIAL PROPERTY ON LICHFIELD ROAD - FORMER RE/MAX OFFICE FOR LET

Summary:

This former RE/MAX office at 155 Lichfield Road offers an exceptional commercial letting opportunity, which is now available for £500 per month. Boasting a prime location with versatile space, it's the perfect setting for businesses looking to establish or expand their presence. With negotiable lease terms and a reasonable deposit of £1500, this property promises adaptability to fit your business needs.

The interior includes a bright, open office area, a convenient kitchen, a private toilet, and an additional room that can be tailored to various commercial uses.

Each party are to be responsible for their own legal costs incurred during this transaction.

Property Description:

The commercial space, previously the thriving hub of a RE/MAX Office, presents a clean, professional environment with ample room for customisation. The photos reveal a well-lit, expansive office area with a tidy, tiled toilet featuring modern fixtures.

A compact kitchen with cabinetry and an elongated counter provides convenience for day-to-day operations. The neutral colour throughout the premises is a blank canvas, ready to be branded with your company's unique identity.

Main Particulars

SPACIOUS COMMERCIAL PROPERTY ON LICHFIELD ROAD - FORMER RE/MAX OFFICE FOR LET

Summary:

This former RE/MAX office at 155 Lichfield Road offers an exceptional commercial letting opportunity, which is now available for £500 per month. Boasting a prime location with versatile space, it's the perfect setting for businesses looking to establish or expand their presence. With negotiable lease terms and a reasonable deposit of £1500, this property promises adaptability to fit your business needs.

The interior includes a bright, open office area, a convenient kitchen, a private toilet, and an additional room that can be tailored to various commercial uses.

Each party are to be responsible for their own legal costs incurred during this transaction.

Property Description:

The commercial space, previously the thriving hub of a RE/MAX Office, presents a clean, professional environment with ample room for customisation. The photos reveal a well-lit, expansive office area with a tidy, tiled toilet featuring modern fixtures.

A compact kitchen with cabinetry and an elongated counter provides convenience for day-to-day operations. The neutral colour throughout the premises is a blank canvas, ready to be branded with your company's unique identity.

Rateable Value - Current rateable value (1 April 2023 to present)

£4,600

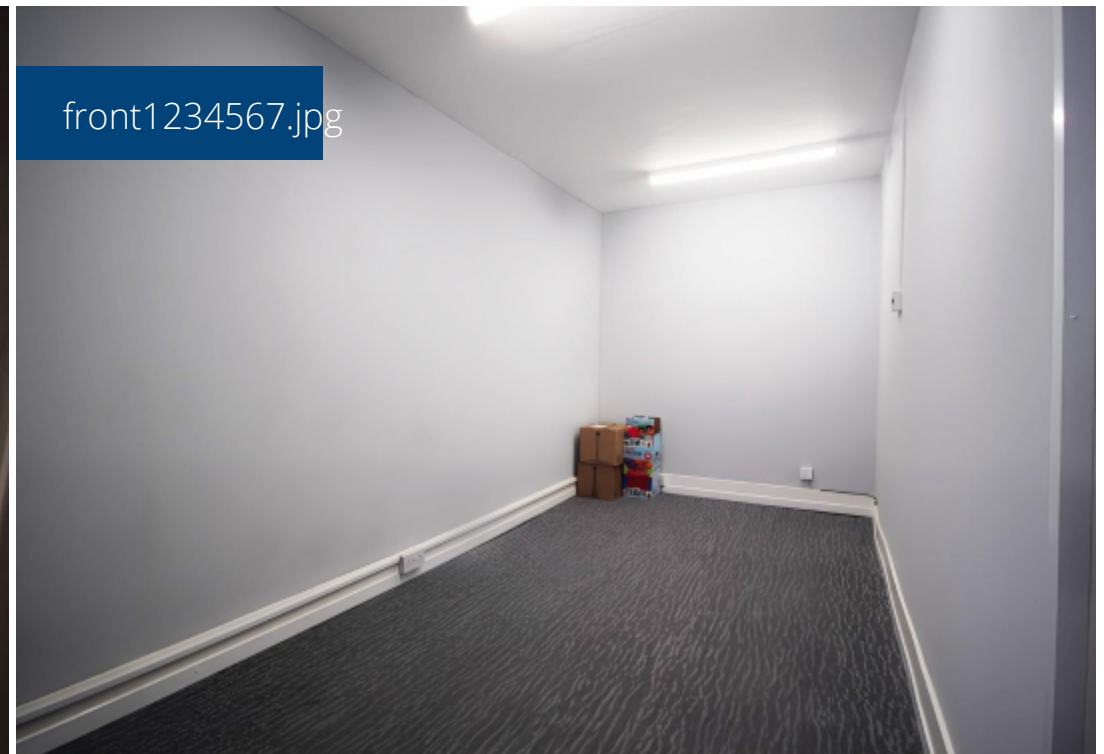
This is the rateable value for the property. It is not what you pay in business rates or rent. Your local council uses the rateable value to calculate the business rates bill.

Small Business Rate Relief - Small business rate relief You can get small business rate relief if: your property's rateable value is less than £15,000 and your business only uses one property - you may still be able to get relief if you use more

front123456.jpg



front1234567.jpg



front12345678909.jpg



front12345678.jpg



Telephone: 01922 322988



www.remaxlocalestateagents.co.uk