



£600 Monthly

Harrison Street, Walsall

Commercial Property

01922 322988



www.remaxlocalestateagents.co.uk



Step Inside

Key Features

- Accessible Location
- Versatile Space
- Modern Frontage
- Ready for Customisation
- Lease Flexibility
- £1800 Security Deposit

Property Description

COMMERCIAL OPPORTUNITY IN THE HEART OF BLOXWICH

Charming Retail Space Just Off Bloxwich High Street

Nestled in the bustling locality of Harrison Street, this versatile retail shop presents a rare rental opportunity in Bloxwich. The well-positioned space is now available for a minimum of a 12-month lease, offering a flexible term to prospective business owners. At £600 per month, this accessible unit sits just a stone's throw away from Bloxwich High Street, benefiting from both the vibrant local trade and the community atmosphere.

The shopfront, showcased in the photographs, exudes modern appeal with large, inviting windows that flood the space with natural light, perfect for a variety of business ventures. The interior, depicted as a blank canvas, awaits a personal touch to transform the shop into an enticing commercial hub.

This property represents an excellent option for those looking to capitalise on the strategic location and the existing demand in the area.

Take the first step towards your business's future and schedule a viewing to see how this shop can cater to your business aspirations.

Main Particulars

COMMERCIAL OPPORTUNITY IN THE HEART OF BLOXWICH

Charming Retail Space Just Off Bloxwich High Street

Nestled in the bustling locality of Harrison Street, this versatile retail shop presents a rare rental opportunity in Bloxwich. The well-positioned space is now available for a minimum of a 12-month lease, offering a flexible term to prospective business owners. At £600 per month, this accessible unit sits just a stone's throw away from Bloxwich High Street, benefiting from both the vibrant local trade and the community atmosphere.

The shopfront, showcased in the photographs, exudes modern appeal with large, inviting windows that flood the space with natural light, perfect for a variety of business ventures. The interior, depicted as a blank canvas, awaits a personal touch to transform the shop into an enticing commercial hub.

This property represents an excellent option for those looking to capitalise on the strategic location and the existing demand in the area.

Take the first step towards your business's future and schedule a viewing to see how this shop can cater to your business aspirations.

Current Rateable Value - Current rateable value (1 April 2023 to present)

£3,900

This is the rateable value for the property. It is not what you pay in business rates or rent. Your local council uses the rateable value to calculate the business rates bill.

Small Business Rate Relief - Small Business Rate Relief - Small business rate relief You can get small business rate relief if: your property's rateable value is less than £15,000 and your business only uses one property - you may still be able to get relief if you use more

IMG_1837.jpeg



IMG_2085.jpeg

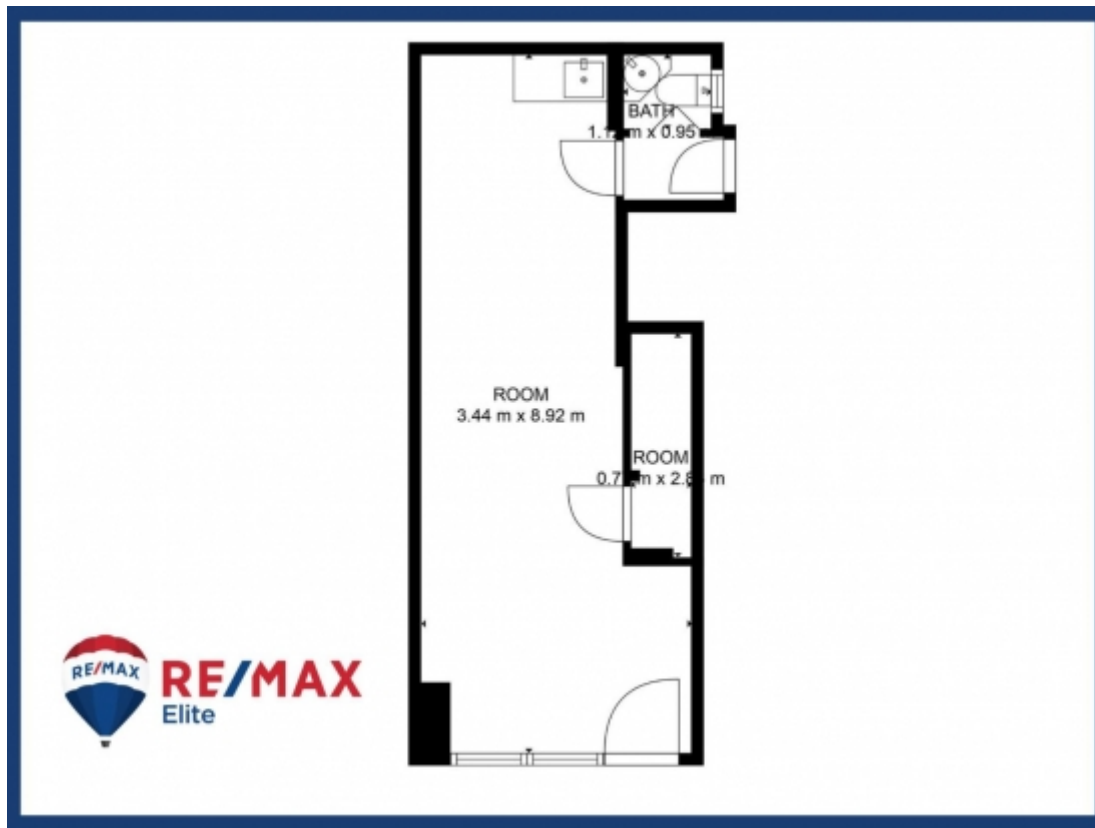


IMG_2317.jpeg



IMG_2394.jpeg





This floorplan is for illustrative purposes only and the location of doors, windows and other items are approximate.

Agents notes: All measurements are approximate and for general guidance only and whilst every attempt has been made to ensure accuracy, they must not be relied on. The fixtures, fittings and appliances referred to have not been tested and therefore no guarantee can be given that they are in working order. Internal photographs are reproduced for general information and it must not be inferred that any item shown is included with the property. Copyright ©

Telephone: 01922 322988



www.remaxlocalestateagents.co.uk