



£750 Monthly

George Street, Town Centre, Walsall

Commercial Property

01922 322988



[www.remaxlocalestateagents.co.uk](http://www.remaxlocalestateagents.co.uk)



# Step Inside

---

## Key Features

- PRIME COMMERCIAL UNIT
- LOCATED NEXT TO TOWN CENTRE
- £750 PER MONTH
- LEASE TERMS ARE NEGOTIABLE
- DEPOSIT = £2250
- SPACIOUS AND WELL-LIT INTERIOR

## Property Description

COMMERCIAL LET OPPORTUNITY IN WALSALL, WS1

RENT: £750 PCM

DESCRIPTION: An excellent commercial let opportunity available in Walsall, WS1. The unit, previously used as a hair salon, will be cleared for new tenants. It is conveniently located next to the town centre, making it an ideal spot for various businesses.

You may be exempt from Business rates (please check with the local council). Each party will be responsible for their own legal representation regarding the lease agreement.

The unit is spacious and well-lit, providing a welcoming atmosphere for customers. With its prime location next to the town centre, this property is perfect for businesses looking to attract a high footfall. The lease terms are negotiable, allowing flexibility for the new tenant.

CONTACT:

For more information or to arrange a viewing, please contact us. This is a fantastic opportunity to secure a prime commercial space in a bustling area.

## Main Particulars

COMMERCIAL LET OPPORTUNITY IN WALSALL, WS1

RENT: £750 PCM

DESCRIPTION: An excellent commercial let opportunity available in Walsall, WS1. The unit, previously used as a hair salon, will be cleared for new tenants. It is conveniently located next to the town centre, making it an ideal spot for various businesses.

You may be exempt from Business rates (please check with the local council). Each party will be responsible for their own legal representation regarding the lease agreement.

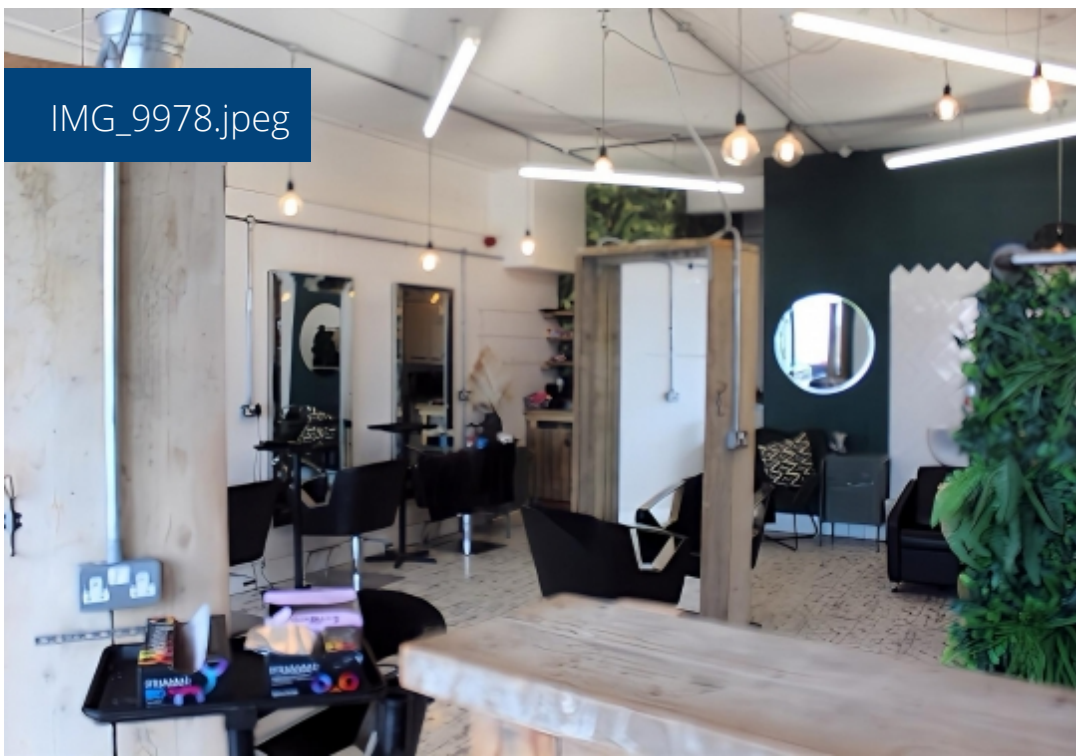
The unit is spacious and well-lit, providing a welcoming atmosphere for customers. With its prime location next to the town centre, this property is perfect for businesses looking to attract a high footfall. The lease terms are negotiable, allowing flexibility for the new tenant.

CONTACT:

For more information or to arrange a viewing, please contact us. This is a fantastic opportunity to secure a prime commercial space in a bustling area.



IMG\_9978.jpeg



IMG\_0034.jpeg



IMG\_0082.jpeg



IMG\_0111.jpeg



Telephone: 01922 322988



---

[www.remaxlocalestateagents.co.uk](http://www.remaxlocalestateagents.co.uk)